

# JMLA Bronze - Tonleitern

## F - Tuba (C - b)

portato, legato, staccato



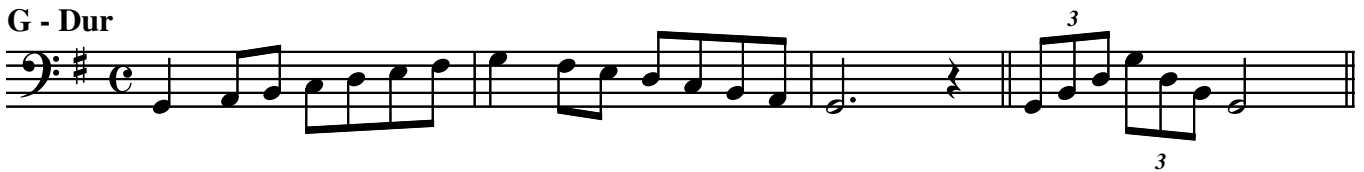
NIEDERÖSTERREICHISCHER  
BLASMUSIKVERBAND

♩ = 92

D - Dur



G - Dur



C - Dur



F - Dur



Bb - Dur



Es - Dur



# JMLA Bronze - Tonleitern

## F - Tuba (C - b)

portato, legato, staccato



NIEDERÖSTERREICHISCHER  
BLASMUSIKVERBAND

♩ = 92

As - Dur



Des - Dur



Ges - Dur



h - Moll



e - Moll



# JMLA Bronze - Tonleitern

## F - Tuba (C - b)

portato, legato, staccato



NIEDERÖSTERREICHISCHER  
BLASMUSIKVERBAND

♩ = 92

### a - Moll

Two staves of musical notation for the a - Moll scale. The first staff shows the scale from C2 to C3. The second staff shows the scale from C3 to C4, including a triplet of eighth notes (G3, A3, B3) and a final C4 note.

### d - Moll

Two staves of musical notation for the d - Moll scale. The first staff shows the scale from D2 to D3. The second staff shows the scale from D3 to D4, including a triplet of eighth notes (A3, B3, C4) and a final D4 note.

### g - Moll

Two staves of musical notation for the g - Moll scale. The first staff shows the scale from G2 to G3. The second staff shows the scale from G3 to G4, including a triplet of eighth notes (D3, E3, F3) and a final G4 note.

### c - Moll

Two staves of musical notation for the c - Moll scale. The first staff shows the scale from C2 to C3. The second staff shows the scale from C3 to C4, including a triplet of eighth notes (G3, A3, B3) and a final C4 note.

# JMLA Bronze - Tonleitern

## F - Tuba (C - b)

portato, legato, staccato



NIEDERÖSTERREICHISCHER  
BLASMUSIKVERBAND

♩ = 92

### f - Moll

### b - Moll

### es - Moll

### chromatische Skala